

INDOOR UNIT

No. OBB957
REVISED EDITION-A

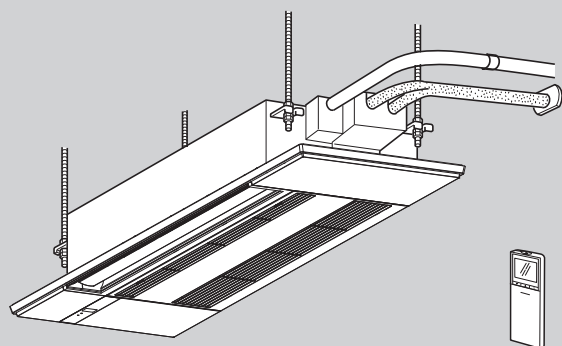
PARTS CATALOG

Models

MLZ-KX09NL - U1

MLZ-KX12NL - U1

MLZ-KX18NL - U1



CONTENTS

1. SERVICE PARTS LIST 2
2. OPTIONAL PARTS 6

SERVICE MANUAL (OBH957)

Revision A:

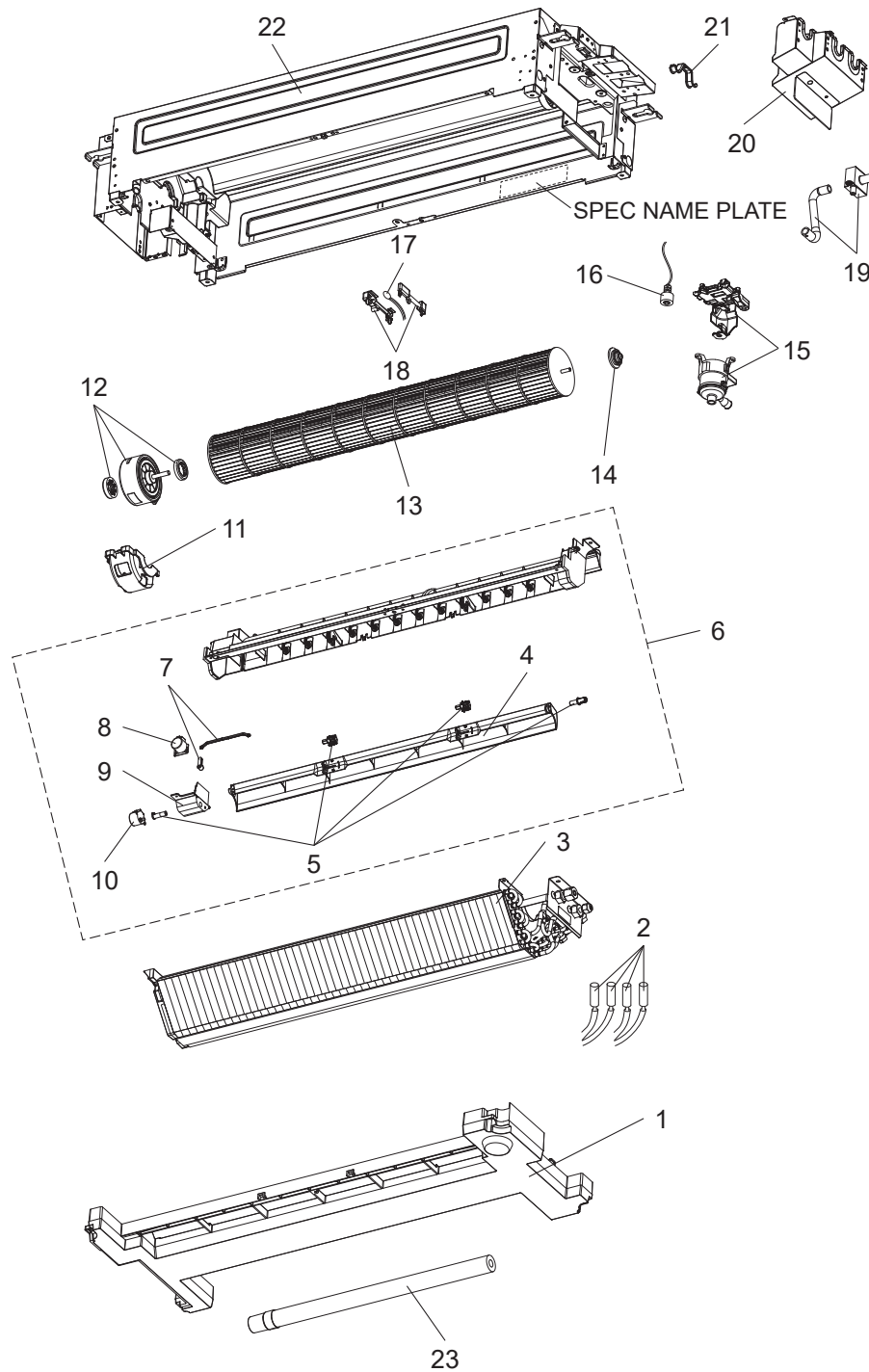
• Some parts numbers have been changed.

1

SERVICE PARTS LIST

MLZ-KX09NL MLZ-KX12NL MLZ-KX18NL

1-1. INDOOR UNIT STRUCTURAL PARTS AND FUNCTIONAL PARTS



1-1. INDOOR UNIT STRUCTURAL PARTS AND FUNCTIONAL PARTS

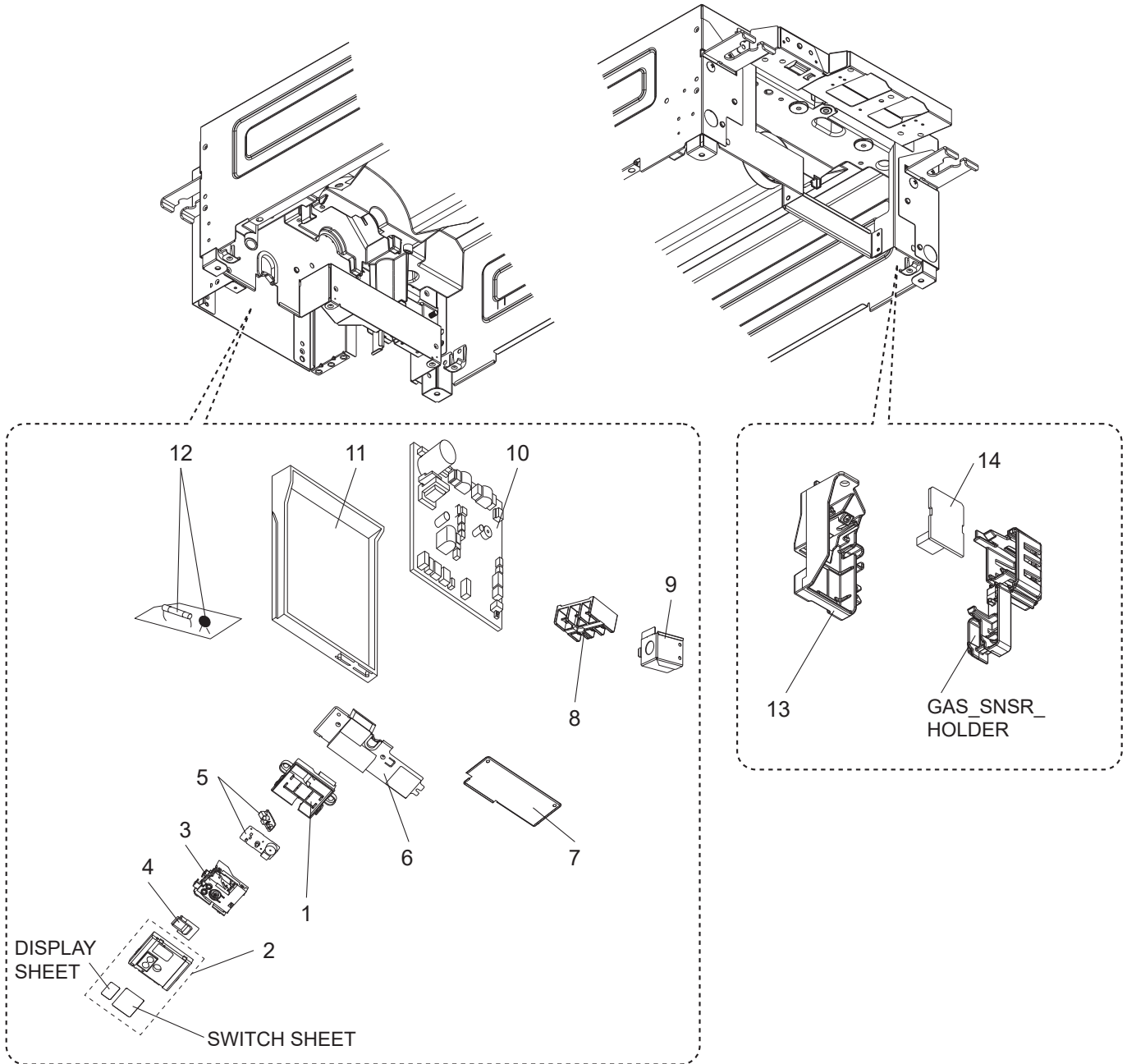
1. The part quantity below indicates the required number of pieces per unit.

2. The circled No. indicates that the part is not shown in the figure.

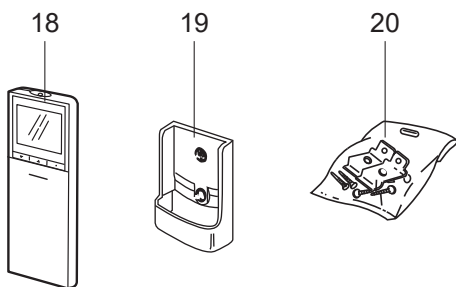
No.	Part No.	Part Name				Symbol in Wiring Diagram	Remarks
			MLZ-KX09NL-U1	MLZ-KX12NL-U1	MLZ-KX18NL-U1		
1	U01 A01 529	DRAIN PAN	1	1	1		
2	U01 A07 307	INDOOR COIL THERMISTOR	1	1		RT12, RT13	
2	U01 A08 307	INDOOR COIL THERMISTOR			1	RT15	
2	U01 A06 307	INDOOR COIL THERMISTOR			1	RT12, RT13, RT14	
3	U01 A05 620	INDOOR HEAT EXCHANGER	1	1			
3	U01 A06 620	INDOOR HEAT EXCHANGER			1		
4	U01 A01 042	HORIZONTAL VANE	1	1	1		
5	U01 A01 043	VANE SHAFT SET	1	1	1		
6	U01 A02 236	STABILIZER ASSEMBLY	1	1	1		Includes LINK, VERTICAL VANE MOTOR (MV1), HORIZONTAL VANE MOTOR (MV2), VANE MOTOR SUPPORT, VERTICAL VANE, HORIZONTAL VANE and VANE SHAFT SET
7	U01 A02 034	LINK	1	1	1		CRANK SET
8	U01 A01 046	VERTICAL VANE MOTOR	1	1	1	MV1	
9	U01 A01 045	VANE MOTOR SUPPORT	1	1	1		
10	U01 A03 044	HORIZONTAL VANE MOTOR	1	1	1	MV2	
11	U01 A03 333	MOTOR BAND	1	1	1		
12	U01 A05 300	INDOOR FAN MOTOR	1	1	1	MF	RC0J30-□□ Includes MOTOR BAND
13	U01 A04 302	LINE FLOW FAN	1	1	1		
14	U01 A05 510	BEARING MOUNT ASSEMBLY	1	1	1		Includes SLEEVE BEARING
15	U01 A02 539	DRAIN PUMP SET	1	1	1	DP	Includes BASE, FLOAT SENSOR, HOLDER, SCREW SET & BAND for tightening the insertion slot
16	U01 A01 541	FLOAT SENSOR	1	1	1	FS	
17	U01 A07 308	ROOM TEMPERATURE THERMISTOR	1	1	1	RT11	
18	U01 A01 084	SENSOR HOLDER	1	1	1		COVER, HOLDER SET
19	U01 003 090	DRAIN PIPE	1	1	1		Includes BAND for tightening the insertion slot
20	U01 A03 635	DRAIN COVER	1	1	1		
21	U01 A02 558	PIPE FIXING BAND	1	1			
21	U01 A03 558	PIPE FIXING BAND			1		
22	U01 A05 234	CABINET ASSEMBLY	1	1	1		Not including SPEC NAME PLATE LABEL
23	U01 A02 702	DRAIN HOSE	1	1	1		
②4	U01 008 987	RED LABEL	2	2	2		

MLZ-KX09NL MLZ-KX12NL MLZ-KX18NL

1-2. INDOOR UNIT ELECTRICAL PARTS AND FUNCTIONAL PARTS



1-3. ACCESSORY AND REMOTE CONTROLLER



OBB957A

1-2. INDOOR UNIT ELECTRICAL PARTS AND FUNCTIONAL PARTS

1. The part quantity below indicates the required number of pieces per unit.

2. The circled No. indicates that the part is not shown in the figure.

No.	Part No.	Part Name	MLZ-KX09NL - U1			Symbol in Wiring Diagram	Remarks
			MLZ-KX12NL - U1	MLZ-KX18NL - U1			
1	U01 A01 815	DISPLAY LEAD COVER	1	1	1		
2	U01 A02 815	DISPLAY RECEIVER COVER	1	1	1		
3	U01 A01 085	DISPLAY RECEIVER HOLDER	1	1	1		
4	U01 A01 817	RECEIVER COVER	1	1	1		
5	U01 A69 452	DISPLAY RECEIVER P.C. BOARD	1	1	1		
6	U01 A05 811	PB COVER	1	1	1		RK00T445G02
7	U01 A05 814	TB COVER	1	1			RK00T449G27
7	U01 A06 814	TB COVER			1		RK00T449G29
8	U01 A04 374	TERMINAL BLOCK	1	1	1	TB	3P
9	U01 A05 978	CONDUIT PLATE	1	1	1		
10	U01 A66 452	ELECTRONIC CONTROL P.C. BOARD	1				
10	U01 A67 452	ELECTRONIC CONTROL P.C. BOARD		1			
10	U01 A68 452	ELECTRONIC CONTROL P.C. BOARD			1		
11	U01 A01 690	ELECTRONIC CONTROL P.C. BOARD BOX	1	1	1		
12	U01 002 239	FUSE VARISTOR SET	1	1	1	F11, NR11, NR12	T6.3AL250V
13	U01 A02 084	REFRIGERANT SENSOR HOLDER	1	1	1		
14	U01 A03 084	REFRIGERANT SENSOR	1	1	1		
⑮	U01 A08 392	LEAD WIRE	1	1	1		DM78C02QG01 (For DISPLAY RECEIVER P.C. BOARD)
⑯	U01 A09 392	LEAD WIRE	1	1	1		DY00C301G04 (For VANE MOTOR)
⑰	U01 001 937	WI-FI INTERFACE	1	1	1		

1-3. ACCESSORY AND REMOTE CONTROLLER

1. The part quantity below indicates the required number of pieces per unit.

No.	Part No.	Part Name	MLZ-KX09NL - U1			Symbol in Wiring Diagram	Remarks
			MLZ-KX12NL - U1	MLZ-KX18NL - U1			
18	U01 A24 426	REMOTE CONTROLLER	1	1	1		SH24Z
19	U01 A04 083	REMOTE CONTROLLER HOLDER	1	1	1		
20	U01 002 087	SCREW ASSEMBLY	1	1	1		

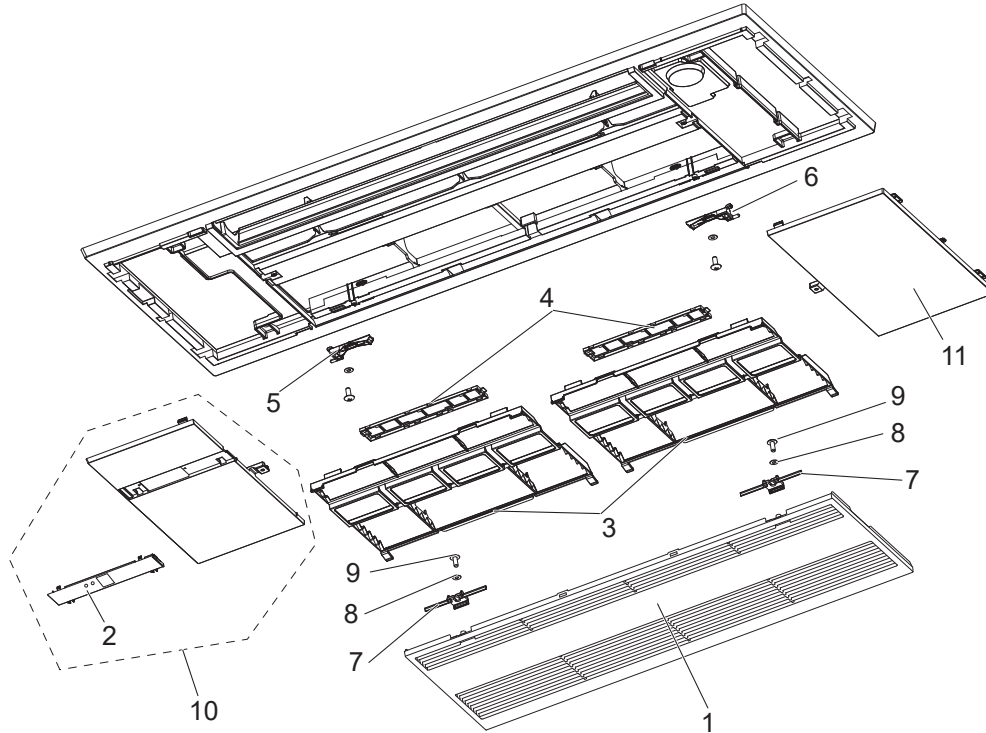
2

OPTIONAL PARTS

MLZ-KX09NL MLZ-KX12NL MLZ-KX18NL

2-1. GRILLE

MLP-449WU: MLZ-KX09/12/18NL - [U1]



1. The part quantity below indicates the required number of pieces per unit.
2. The circled No. indicates that the part is not shown in the figure.

No.	Part No.	Part Name	MLP-449WU	Symbol in Wiring Diagram	Remarks
1	U02 001 521	GRILLE ASSEMBLY (W)	1		
2	U02 001 816	DISPLAY COVER SET	1		Includes display sheet (Mitsubishi)
3	U02 001 500	AIR FILTER (AIR PURIFYING FILTER)	2		
4	—	AIR CLEANING FILTER (ANTI-ALLERGY ENZYME FILTER)	1		MAC-408FT-E
5	U02 002 521	GRILLE SHAFT L	1		
6	U02 003 521	GRILLE SHAFT R	1		
7	U02 004 521	GRILLE KNOB (W)	2		
8	U02 A02 067	BOSS CAP (FOR FIXING GRILLE KNOB)	2		
9	U02 001 087	SCREW	2		Z004Z015H37
10	U02 A14 000	SIDE PANEL L ASSEMBLY (W)	1		Includes display sheet (Mitsubishi)
11	U02 A13 000	SIDE PANEL R ASSEMBLY (W)	1		
⑫	U02 011 087	SCREW CAP (W)	1		
⑬	U02 002 087	SCREW ASSEMBLY	1		M5 × 0.8 × 16: 6 pcs. Self-tapping screws 4 × 12: 1 piece

2-2. AIR CLEANING FILTER (ANTI-ALLERGY ENZYME FILTER)

Back side of air filter

Clean every 3 months:

- Remove dirt by a vacuum cleaner.
- Install the tabs into the intake grille hole.

When dirt cannot be removed by vacuum cleaning:

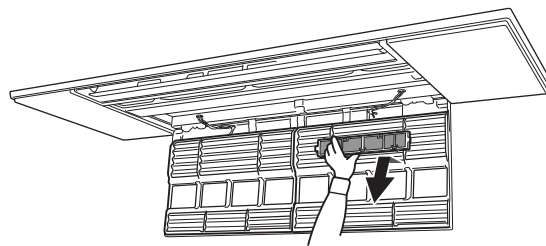
- Soak the filter and its frame in lukewarm water before rinsing it.
(Diluted mild detergents can be used when dirt cannot be removed.)
- After washing, dry it well in shade.

Every year:

- Replace it with a new air cleaning filter for best performance.

NOTE:

- Clean the filters regularly for best performance and to reduce power consumption.
- Dirty filters cause condensation in the air conditioner which will contribute to the growth of fungi such as mold.



Model	Part No.
MLZ-KX09NL	MAC-408FT-E
MLZ-KX12NL	
MLZ-KX18NL	

MITSUBISHI ELECTRIC CORPORATION

HEAD OFFICE: TOKYO BUILDING, 2-7-3, MARUNOUCHI, CHIYODA-KU, TOKYO 100-8310, JAPAN

© Copyright 2024 MITSUBISHI ELECTRIC CORPORATION
Issued: Jun. 2025. No. OBB957 REVISED EDITION-A
Published: Nov. 2024 No. OBB957
Made in Japan

Specifications are subject to change without notice.