

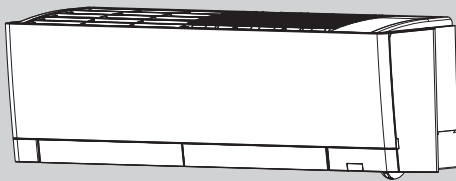
INDOOR UNIT

No. OBB945
REVISED EDITION-A

PARTS CATALOG

Models

MSZ-FX06NL	-	<input type="checkbox"/> U1	,	<input type="checkbox"/> U2
MSZ-FX09NL	-	<input type="checkbox"/> U1	,	<input type="checkbox"/> U2
MSZ-FX12NL	-	<input type="checkbox"/> U1	,	<input type="checkbox"/> U2
MSZ-FX15NL	-	<input type="checkbox"/> U1	,	<input type="checkbox"/> U2
MSZ-FX18NL	-	<input type="checkbox"/> U1	,	<input type="checkbox"/> U2
MSZ-FX24NL	-	<input type="checkbox"/> U1	,	<input type="checkbox"/> U2



CONTENTS

1. SERVICE PARTS LIST	2
2. OPTIONAL PARTS	19

SERVICE MANUAL (OBH945)

Revision A:

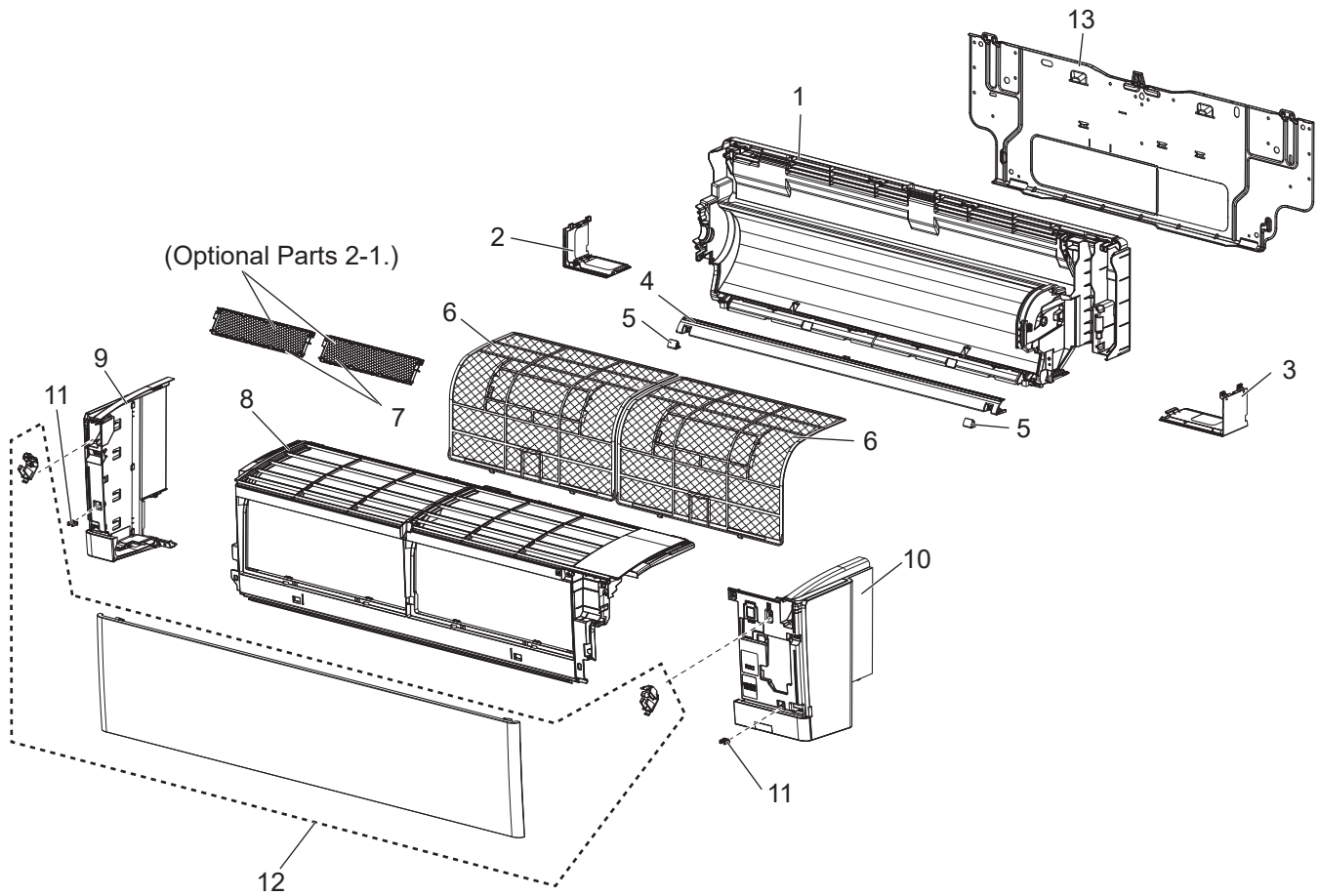
• MSZ-FX06/09/12/15/18/24NL - U2 have been added.

1 SERVICE PARTS LIST

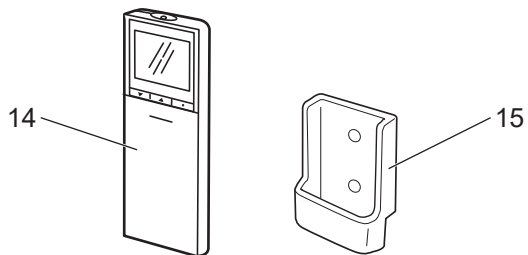
MSZ-FX06NL-U1 MSZ-FX09NL-U1 MSZ-FX12NL-U1

MSZ-FX15NL-U1 MSZ-FX18NL-U1 MSZ-FX24NL-U1

1-1. INDOOR UNIT STRUCTURAL PARTS



1-2. ACCESSORY AND REMOTE CONTROLLER



1-1. INDOOR UNIT STRUCTURAL PARTS

1. The part quantity below indicates the required number of pieces per unit.

No.	Part No.	Part name	MSZ-FX06NL - [U1]	MSZ-FX09NL - [U1]	MSZ-FX12NL - [U1]	MSZ-FX15NL - [U1]	MSZ-FX18NL - [U1]	MSZ-FX24NL - [U1]	Symbol in Wiring Diagram	Remarks
1	E22 9J7 234	BOX ASSEMBLY	1	1	1	1	1	1		
2	E22 61V 976	CORNER BOX (L)	1	1	1	1	1	1		
3	E22 61V 975	CORNER BOX (R)	1	1	1	1	1	1		
4	E22 69R 717	PANEL (U)	1	1	1	1	1	1		
5	E22 9J7 067	SCREW CAP ASSEMBLY	2	2	2	2	2	2		2 PCS/SET
6	E22 61V 100	AIR FILTER	2	2	2	2	2	2		1 PC/SET
7	—	AIR CLEANING FILTER (ELECTROSTATIC ANTI-ALLERGY ENZYME FILTER / MICROPARTICLE CATCHING FILTER)	1	1	1	1	1	1		1 PC/SET MAC-2420FT-E / MAC-415FT-E
8	E22 6H7 000	PANEL ASSEMBLY (F)	1	1	1	1	1	1		
9	E22 6H7 086	PANEL ASSEMBLY (L)	1	1	1	1	1	1		Includes CATCH
10	E22 6H7 085	PANEL ASSEMBLY (R)	1	1	1	1	1	1		Includes CATCH
11	E22 F95 142	CATCH	2	2	2	2	2	2		2 PCS/SET
12	E22 6H7 010	FRONT PANEL	1	1	1	1	1	1		
13	E22 7C3 970	INSTALLATION PLATE	1	1	1	1	1	1		

1-2. ACCESSORY AND REMOTE CONTROLLER

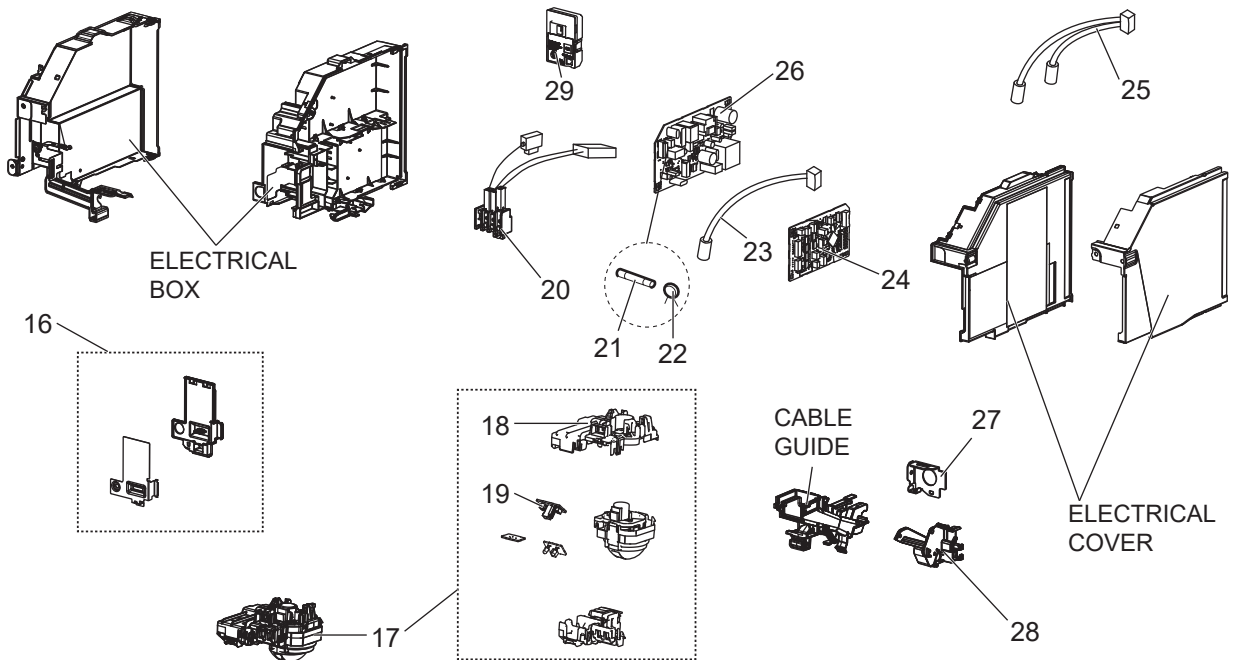
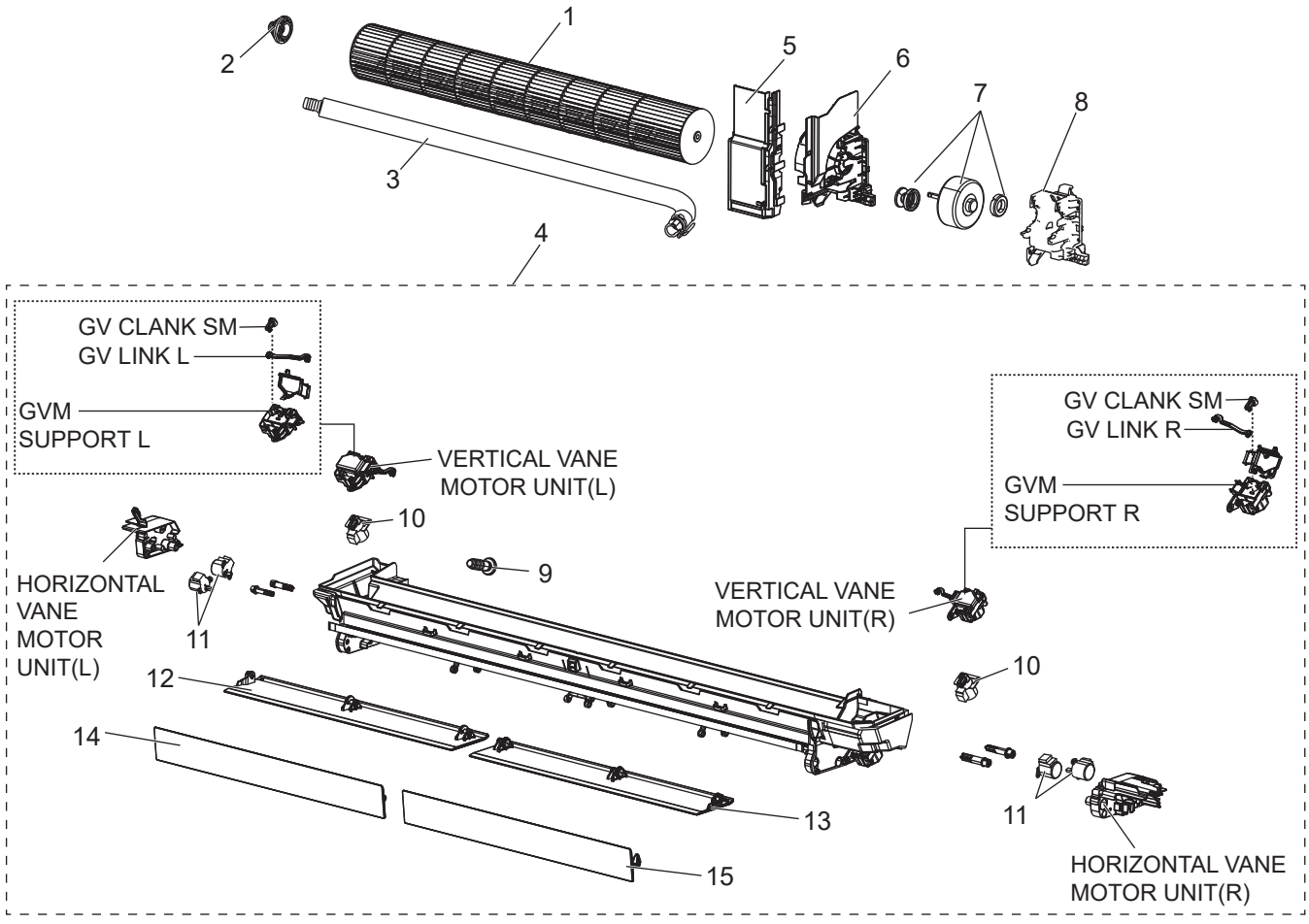
1. The part quantity below indicates the required number of pieces per unit.

No.	Part No.	Part name	MSZ-FX06NL - [U1]	MSZ-FX09NL - [U1]	MSZ-FX12NL - [U1]	MSZ-FX15NL - [U1]	MSZ-FX18NL - [U1]	MSZ-FX24NL - [U1]	Symbol in Wiring Diagram	Remarks
14	E22 6H7 426	REMOTE CONTROLLER	1	1	1	1	1	1		SH24T
15	E22 41G 083	REMOTE CONTROLLER HOLDER	1	1	1	1	1	1		

MSZ-FX06NL-U1 MSZ-FX09NL-U1 MSZ-FX12NL-U1

MSZ-FX15NL-U1 MSZ-FX18NL-U1 MSZ-FX24NL-U1

1-3. INDOOR UNIT ELECTRICAL PARTS AND FUNCTIONAL PARTS



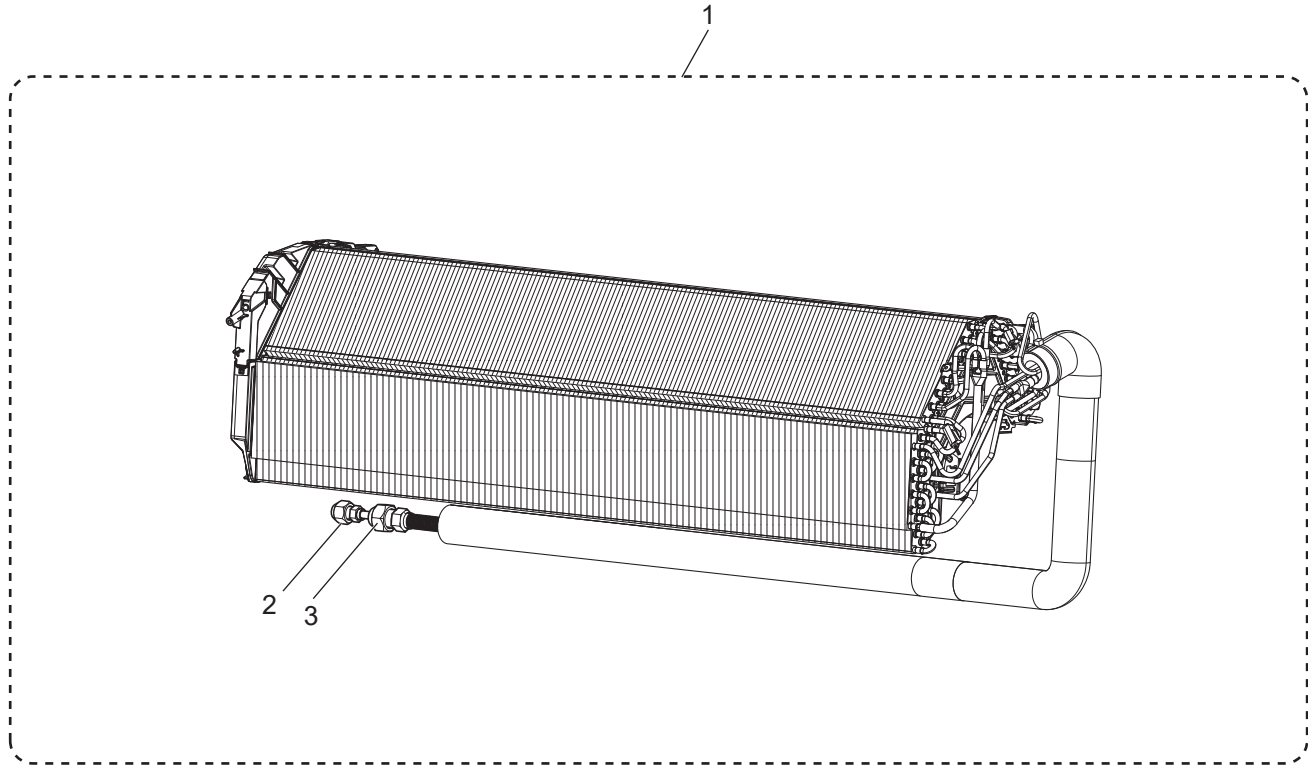
1-3. INDOOR UNIT ELECTRICAL PARTS AND FUNCTIONAL PARTS

1. The part quantity below indicates the required number of pieces per unit.

No.	Part No.	Part name	MSZ-FX06NL - [U1]	MSZ-FX09NL - [U1]	MSZ-FX12NL - [U1]	MSZ-FX15NL - [U1]	MSZ-FX18NL - [U1]	MSZ-FX24NL - [U1]	Symbol in Wiring Diagram	Remarks
1	E22 69R 302	LINE FLOW FAN	1	1	1	1	1	1		
2	E22 A89 509	BEARING MOUNT ASSEMBLY	1	1	1	1	1	1		
3	E22 T20 702	DRAIN HOSE	1	1	1	1	1	1		
4	E22 6H7 235	NOZZLE ASSEMBLY	1	1	1	1	1	1		Full assembly except drain hose
5	E22 69R 541	WATER COVER	1	1	1	1	1	1		
6	E22 69R 333	MOTOR BAND	1	1	1	1	1	1		
7	E22 7C3 300	INDOOR FAN MOTOR	1	1	1	1	1	1	MF	Includes rubber mounts RC0J40- □□
8	E22 70R 333	MOTOR BED	1	1	1	1	1	1		
9	E27 42R 705	DRAIN CAP	1	1	1	1	1	1		
10	E22 J44 303	VERTICAL VANE MOTOR	2	2	2	2	2	2	MV2	
11	E27 103 303	HORIZONTAL VANE MOTOR	4	4	4	4	4	4	MV1	
12	E22 6H7 041	HORIZONTAL VANE LOWER (L)	1	1	1	1	1	1		
13	E22 6H8 041	HORIZONTAL VANE LOWER (R)	1	1	1	1	1	1		
14	E22 6H7 040	HORIZONTAL VANE UPPER (L)	1	1	1	1	1	1		
15	E22 6H8 040	HORIZONTAL VANE UPPER (R)	1	1	1	1	1	1		
16	E22 7C3 784	V.A. CLAMP	1	1	1	1	1	1		
17	E22 6H7 391	DISPLAY AND i-see SENSOR ASSEMBLY	1	1	1	1	1			Includes i-See Sensor, MT, DISPLAY P.C. BOARD, RECEIVER P.C. BOARD
17	E22 7H2 391	DISPLAY AND i-see SENSOR ASSEMBLY						1		Includes i-See Sensor, MT, DISPLAY P.C. BOARD, RECEIVER P.C. BOARD
18	E22 6H7 095	DISPLAY AND RECEIVER P.C.BOARD HOLDER	1	1	1	1	1	1		
19	E22 AU6 468	DISPLAY AND RECEIVER P.C. BOARD	1	1	1	1	1	1		DISPLAY P.C. BOARD, RECEIVER P.C. BOARD combined type
20	E22 7C3 375	TERMINAL BLOCK	1	1	1	1	1	1	TB	
21	E22 C67 382	FUSE	1	1	1	1	1	1	F11	T3.15AL250V
22	E22 K90 385	VARISTOR	1	1	1	1	1	1	NR11	
23	E22 69R 308	ROOM TEMPERATURE THERMISTOR	1	1	1	1	1	1	RT11	
24	E22 6H7 452	ELECTRONIC CONTROL P.C. BOARD	1							
24	E22 6H8 452	ELECTRONIC CONTROL P.C. BOARD		1						
24	E22 6H9 452	ELECTRONIC CONTROL P.C. BOARD			1					
24	E22 7H0 452	ELECTRONIC CONTROL P.C. BOARD				1				
24	E22 7H1 452	ELECTRONIC CONTROL P.C. BOARD					1			
24	E22 7H2 452	ELECTRONIC CONTROL P.C. BOARD						1		
25	E22 6H7 307	INDOOR COIL THERMISTOR	1	1	1	1	1		RT12, RT13	Combined type
25	E22 7H2 307	INDOOR COIL THERMISTOR						1	RT12, RT13	Combined type
26	E22 6H7 440	POWER P.C. BOARD	1	1	1	1	1	1		
27	E22 7C3 978	CONDUIT PLATE	1	1	1	1	1	1		
28	E22 7C3 979	CONDUIT COVER	1	1	1	1	1	1		
29	E22 6H7 457	Wi-Fi ASSEMBLY	1	1	1	1	1	1		Includes SWITCH/BUZZER P.C. BOARD

MSZ-FX06NL-U1 MSZ-FX09NL-U1 MSZ-FX12NL-U1
MSZ-FX15NL-U1 MSZ-FX18NL-U1 MSZ-FX24NL-U1

1-4. INDOOR UNIT HEAT EXCHANGER



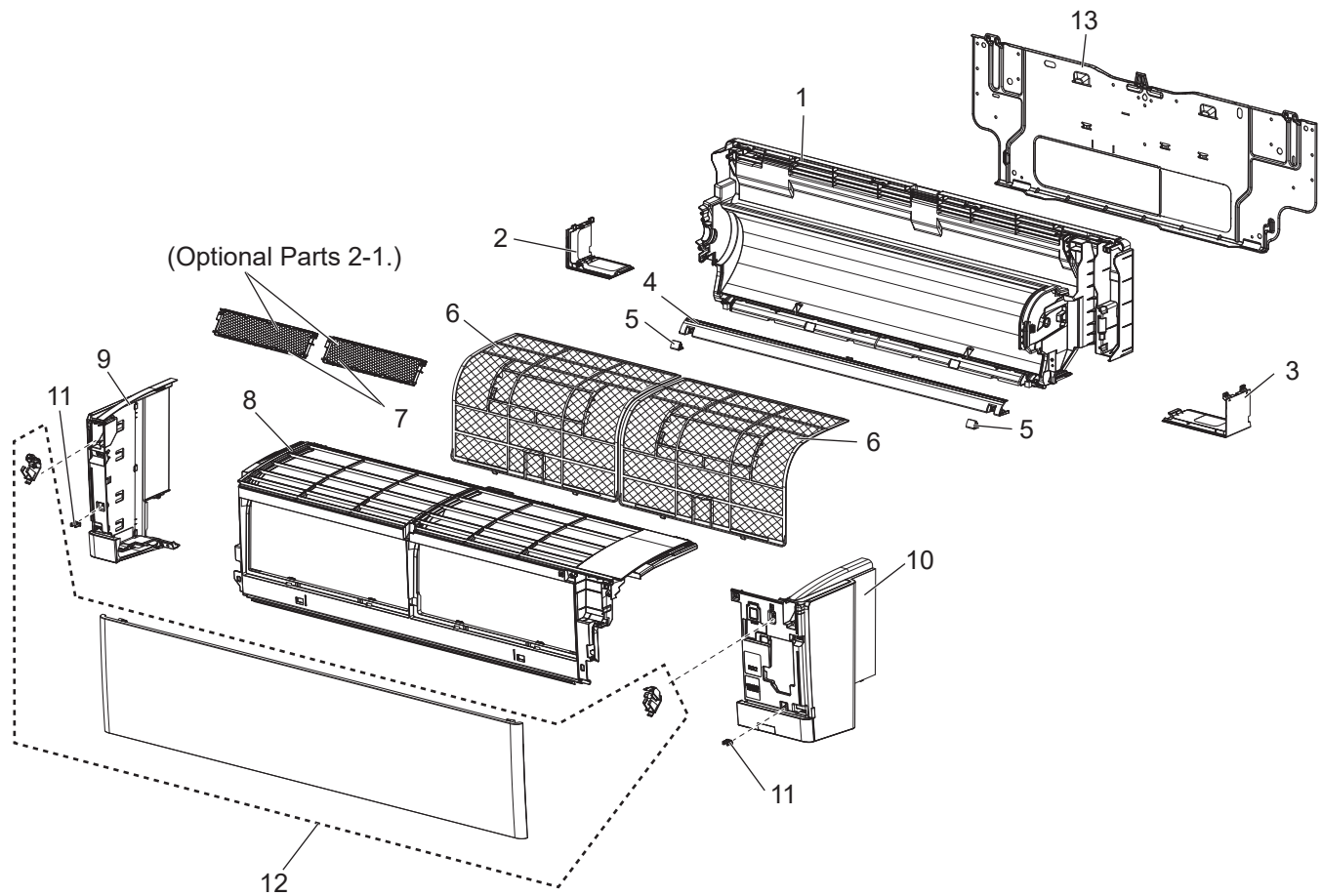
1-4. INDOOR UNIT HEAT EXCHANGER

1. The part quantity below indicates the required number of pieces per unit.

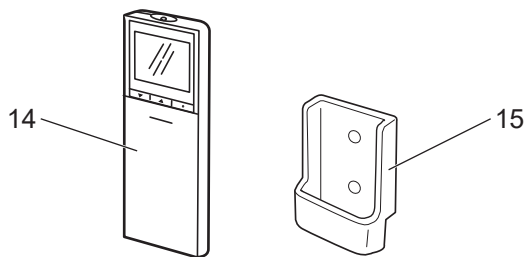
No.	Part No.	Part name	MSZ-FX06NL - [U1]	MSZ-FX09NL - [U1]	MSZ-FX12NL - [U1]	MSZ-FX15NL - [U1]	MSZ-FX18NL - [U1]	MSZ-FX24NL - [U1]	Symbol in Wiring Diagram	Remarks
1	E22 6H7 620	INDOOR HEAT EXCHANGER	1	1	1					
1	E22 7H0 620	INDOOR HEAT EXCHANGER				1	1			
1	E22 7H2 620	INDOOR HEAT EXCHANGER						1		
2	E22 151 667	UNION (LIQUID)	1	1	1	1	1	1		for liquid 1/4 (ø6.35)
3	E22 815 666	UNION (GAS)	1	1	1					for gas 3/8 (ø9.52)
3	E22 155 666	UNION (GAS)				1	1			for gas 1/2 (ø12.7)
3	E22 138 666	UNION (GAS)						1		for gas 5/8 (ø15.88)

MSZ-FX06NL-U2 MSZ-FX09NL-U2 MSZ-FX12NL-U2
MSZ-FX15NL-U2 MSZ-FX18NL-U2 MSZ-FX24NL-U2

1-5. INDOOR UNIT STRUCTURAL PARTS



1-6. ACCESSORY AND REMOTE CONTROLLER



1-5. INDOOR UNIT STRUCTURAL PARTS

1. The part quantity below indicates the required number of pieces per unit.

No.	Part No.	Part name	MSZ-FX06NL - [U2]	MSZ-FX09NL - [U2]	MSZ-FX12NL - [U2]	MSZ-FX15NL - [U2]	MSZ-FX18NL - [U2]	MSZ-FX24NL - [U2]	Symbol in Wiring Diagram	Remarks
1	E22 BB1 234	BOX ASSEMBLY	1	1	1	1	1	1		
2	E22 61V 976	CORNER BOX (L)	1	1	1	1	1	1		
3	E22 61V 975	CORNER BOX (R)	1	1	1	1	1	1		
4	E22 69R 717	PANEL (U)	1	1	1	1	1	1		
5	E22 9J7 067	SCREW CAP ASSEMBLY	2	2	2	2	2	2		2 PCS/SET
6	E22 61V 100	AIR FILTER	2	2	2	2	2	2		1 PC/SET
7	—	AIR CLEANING FILTER (ELECTROSTATIC ANTI-ALLERGY ENZYME FILTER / MICROPARTICLE CATCHING FILTER)	1	1	1	1	1	1		1 PC/SET MAC-2420FT-E / MAC-EMF415FT-E
8	E22 6H7 000	PANEL ASSEMBLY (F)	1	1	1	1	1	1		
9	E22 6H7 086	PANEL ASSEMBLY (L)	1	1	1	1	1	1		Includes CATCH
10	E22 6H7 085	PANEL ASSEMBLY (R)	1	1	1	1	1	1		Includes CATCH
11	E22 F95 142	CATCH	2	2	2	2	2	2		2 PCS/SET
12	E22 6H7 010	FRONT PANEL	1	1	1	1	1	1		
13	E22 7C3 970	INSTALLATION PLATE	1	1	1	1	1	1		

1-6. ACCESSORY AND REMOTE CONTROLLER

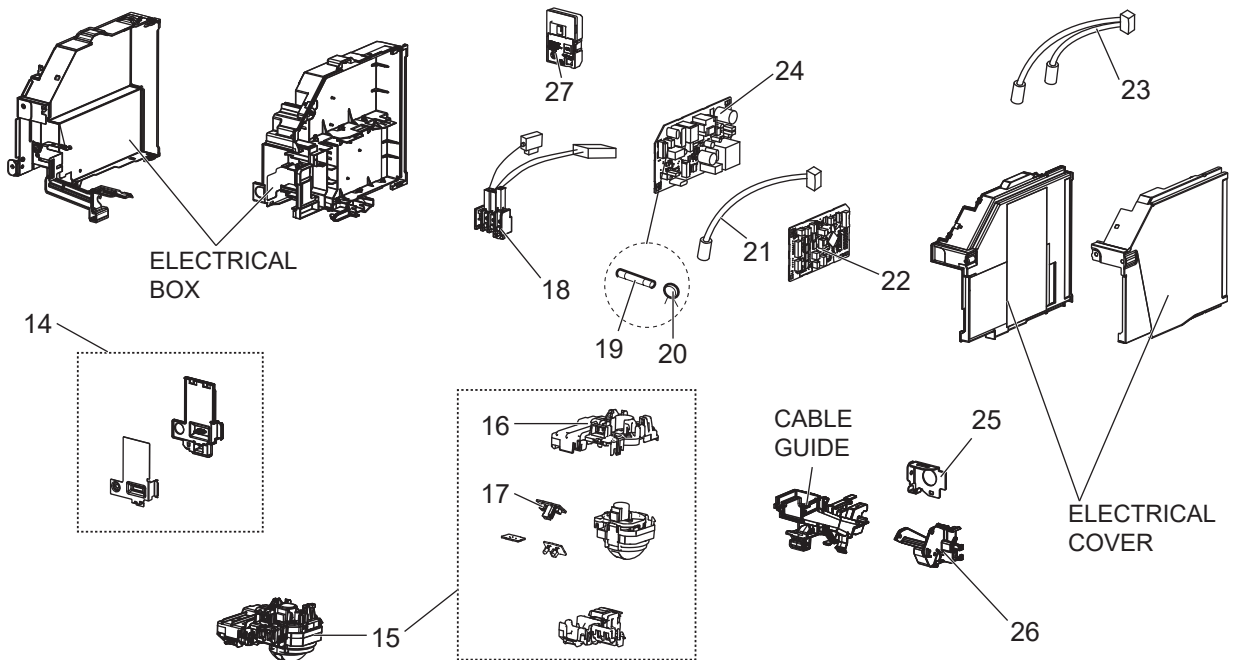
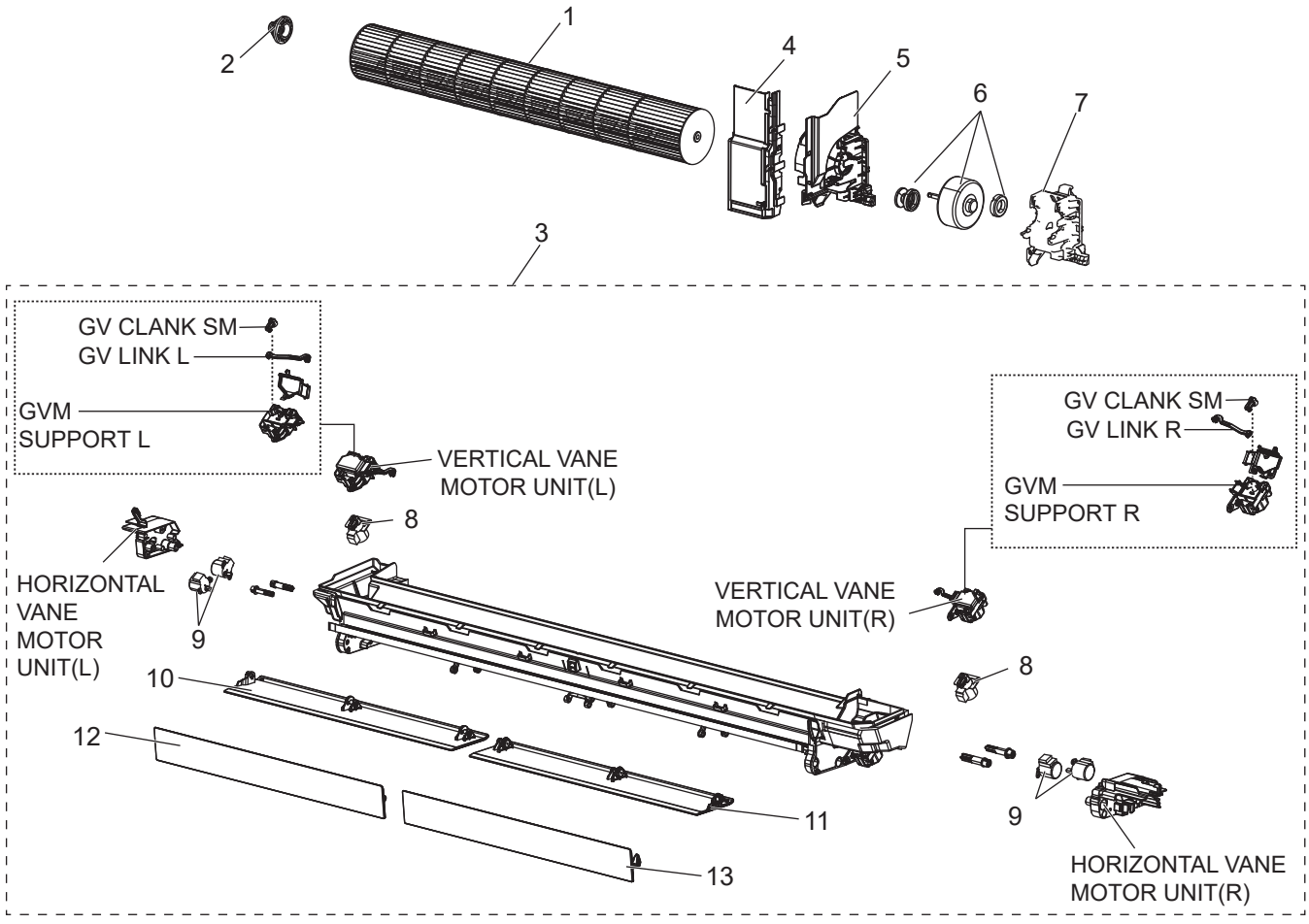
1. The part quantity below indicates the required number of pieces per unit.

No.	Part No.	Part name	MSZ-FX06NL - [U2]	MSZ-FX09NL - [U2]	MSZ-FX12NL - [U2]	MSZ-FX15NL - [U2]	MSZ-FX18NL - [U2]	MSZ-FX24NL - [U2]	Symbol in Wiring Diagram	Remarks
14	E22 6H7 426	REMOTE CONTROLLER	1	1	1	1	1	1		SH24T
15	E22 41G 083	REMOTE CONTROLLER HOLDER	1	1	1	1	1	1		

MSZ-FX06NL-U2 MSZ-FX09NL-U2 MSZ-FX12NL-U2

MSZ-FX15NL-U2 MSZ-FX18NL-U2 MSZ-FX24NL-U2

1-7. INDOOR UNIT ELECTRICAL PARTS AND FUNCTIONAL PARTS



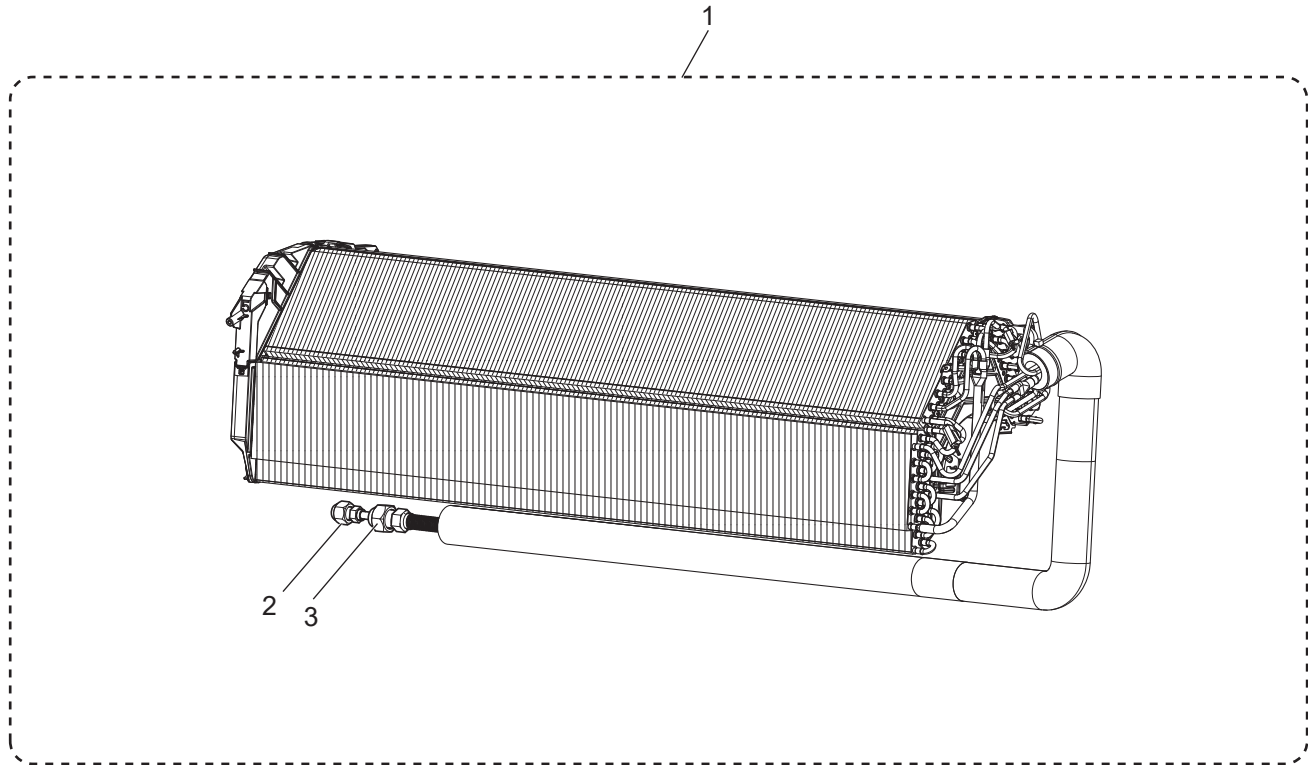
1-7. INDOOR UNIT ELECTRICAL PARTS AND FUNCTIONAL PARTS

1. The part quantity below indicates the required number of pieces per unit.

No.	Part No.	Part name	MSZ-FX06NL-U2	MSZ-FX09NL-U2	MSZ-FX12NL-U2	MSZ-FX15NL-U2	MSZ-FX18NL-U2	MSZ-FX24NL-U2	Symbol in Wiring Diagram	Remarks
1	E22 BB4 302	LINE FLOW FAN	1	1	1	1	1	1		
2	E22 A89 509	BEARING MOUNT ASSEMBLY	1	1	1	1	1	1		
3	E22 6H7 235	NOZZLE ASSEMBLY	1	1	1	1	1	1		Full assembly except drain hose
4	E22 69R 541	WATER COVER	1	1	1	1	1	1		
5	E22 69R 333	MOTOR BAND	1	1	1	1	1	1		
6	E22 7C3 300	INDOOR FAN MOTOR	1	1	1	1	1	1	MF	Includes rubber mounts RC0J40- □□
7	E22 70R 333	MOTOR BED	1	1	1	1	1	1		
8	E22 J44 303	VERTICAL VANE MOTOR	2	2	2	2	2	2	MV2	
9	E27 103 303	HORIZONTAL VANE MOTOR	4	4	4	4	4	4	MV1	
10	E22 6H7 041	HORIZONTAL VANE LOWER (L)	1	1	1	1	1	1		
11	E22 6H8 041	HORIZONTAL VANE LOWER (R)	1	1	1	1	1	1		
12	E22 6H7 040	HORIZONTAL VANE UPPER (L)	1	1	1	1	1	1		
13	E22 6H8 040	HORIZONTAL VANE UPPER (R)	1	1	1	1	1	1		
14	E22 7C3 784	V.A. CLAMP	1	1	1	1	1	1		
15	E22 6H7 391	DISPLAY AND i-see SENSOR ASSEMBLY	1	1	1	1	1			Includes i-See Sensor, MT, DISPLAY P.C. BOARD, RECEIVER P.C. BOARD
15	E22 7H2 391	DISPLAY AND i-see SENSOR ASSEMBLY						1		Includes i-See Sensor, MT, DISPLAY P.C. BOARD, RECEIVER P.C. BOARD
16	E22 6H7 095	DISPLAY AND RECEIVER P.C. BOARD HOLDER	1	1	1	1	1	1		
17	E22 AU6 468	DISPLAY AND RECEIVER P.C. BOARD	1	1	1	1	1	1		DISPLAY P.C. BOARD, RECEIVER P.C. BOARD combined type
18	E22 7C3 375	TERMINAL BLOCK	1	1	1	1	1	1	TB	
19	E22 C67 382	FUSE	1	1	1	1	1	1	F11	T3.15AL250V
20	E22 K90 385	VARISTOR	1	1	1	1	1	1	NR11	
21	E22 69R 308	ROOM TEMPERATURE THERMISTOR	1	1	1	1	1	1	RT11	
22	E22 AU6 452	ELECTRONIC CONTROL P.C. BOARD	1							
22	E22 AU7 452	ELECTRONIC CONTROL P.C. BOARD		1						
22	E22 AU8 452	ELECTRONIC CONTROL P.C. BOARD			1					
22	E22 AU9 452	ELECTRONIC CONTROL P.C. BOARD				1				
22	E22 AV1 452	ELECTRONIC CONTROL P.C. BOARD					1			
22	E22 AV2 452	ELECTRONIC CONTROL P.C. BOARD						1		
23	E22 6H7 307	INDOOR COIL THERMISTOR	1	1	1	1	1		RT12, RT13	Combined type
23	E22 7H2 307	INDOOR COIL THERMISTOR						1	RT12, RT13	Combined type
24	E22 AU6 440	POWER P.C. BOARD	1	1	1	1	1	1		
25	E22 7C3 978	CONDUIT PLATE	1	1	1	1	1	1		
26	E22 7C3 979	CONDUIT COVER	1	1	1	1	1	1		
27	E22 AU6 457	Wi-Fi ASSEMBLY	1	1	1	1	1	1		Includes SWITCH/BUZZER P.C. BOARD

MSZ-FX06NL-U2 MSZ-FX09NL-U2 MSZ-FX12NL-U2
MSZ-FX15NL-U2 MSZ-FX18NL-U2 MSZ-FX24NL-U2

1-8. INDOOR UNIT HEAT EXCHANGER



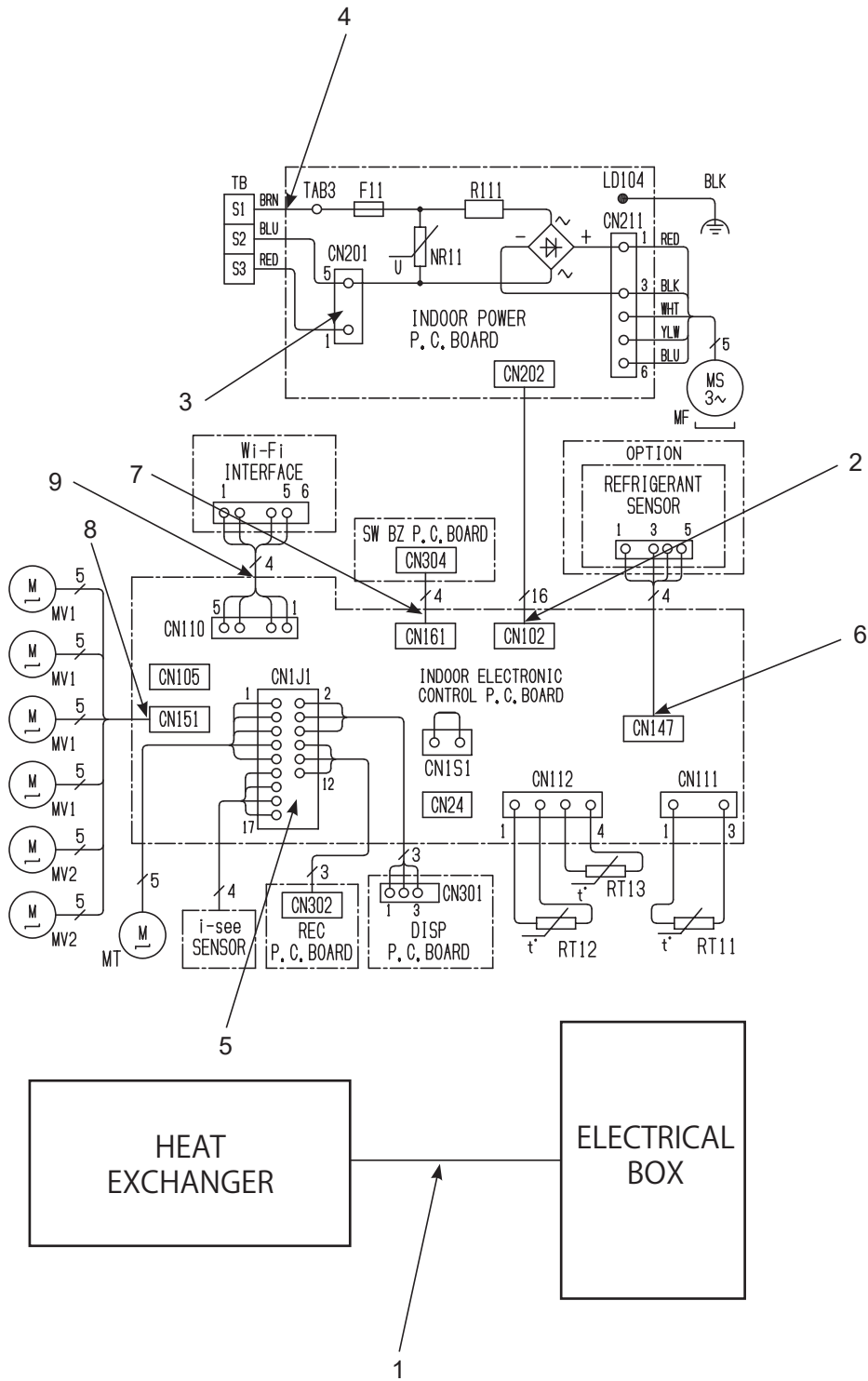
1-8. INDOOR UNIT HEAT EXCHANGER

1. The part quantity below indicates the required number of pieces per unit.

No.	Part No.	Part name	MSZ-FX06NL-U2	MSZ-FX09NL-U2	MSZ-FX12NL-U2	MSZ-FX15NL-U2	MSZ-FX18NL-U2	MSZ-FX24NL-U2	Symbol in Wiring Diagram	Remarks
1	E22 6H7 620	INDOOR HEAT EXCHANGER	1	1	1					
1	E22 7H0 620	INDOOR HEAT EXCHANGER				1	1			
1	E22 7H2 620	INDOOR HEAT EXCHANGER						1		
2	E22 151 667	UNION (LIQUID)	1	1	1	1	1	1		for liquid 1/4 (ø6.35)
3	E22 815 666	UNION (GAS)	1	1	1					for gas 3/8 (ø9.52)
3	E22 155 666	UNION (GAS)				1	1			for gas 1/2 (ø12.7)
3	E22 138 666	UNION (GAS)						1		for gas 5/8 (ø15.88)

MSZ-FX06NL-U2 MSZ-FX09NL-U2 MSZ-FX12NL-U2
 MSZ-FX15NL-U2 MSZ-FX18NL-U2

1-9. LEAD WIRE ASSEMBLY



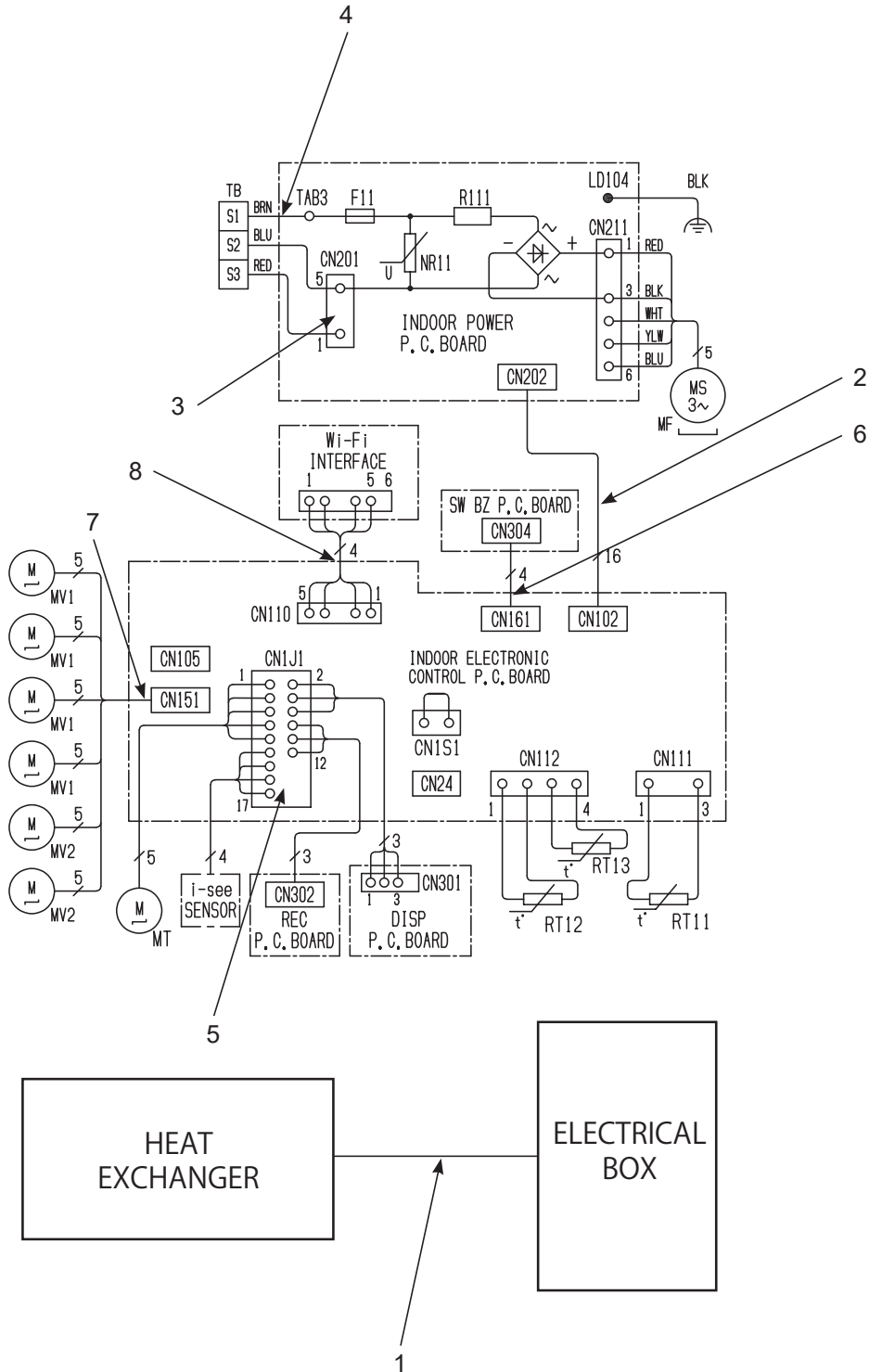
1-9. LEAD WIRE ASSEMBLY

1. The part quantity below indicates the required number of pieces per unit.

No.	Part No.	Part name	MSZ-FX06NL - U2	MSZ-FX09NL - U2	MSZ-FX12NL - U2	MSZ-FX15NL - U2	MSZ-FX18NL - U2	Symbol in Wiring Diagram	Remarks
1	E22 AU3 316	LEAD ASSY	1	1	1	1	1		Ground – HEAT EXCHANGER
2	E22 AU7 316	LEAD ASSY	1	1	1	1	1		CN102(Control P.C.B) – CN202(Power P.C.B)
3	E22 AU8 316	LEAD ASSY	1	1	1	1	1		TB – CN201(Power P.C.B)
4	E22 AU9 316	LEAD ASSY	1	1	1	1	1		TB – TAB3(Power P.C.B)
5	E22 AV1 316	LEAD ASSY	1	1	1	1	1		CN1J1(Control P.C.B) – I-SEE SENSOR ASSEMBLY
6	E22 AV2 316	LEAD ASSY	1	1	1	1	1		CN147(Control P.C.B) – RefrigerantSensor
7	E22 AP5 316	LEAD ASSY	1	1	1	1	1		CN161(Control P.C.B) – SW/BZ P.C.B
8	E22 AP6 316	LEAD ASSY	1	1	1	1	1		CN151(Control P.C.B) – MV1/MV2
9	E22 AP7 316	LEAD ASSY	1	1	1	1	1		CN110(Control P.C.B) – WI-FI interface

MSZ-FX24NL-U2

1-10. LEAD WIRE ASSEMBLY



1-10. LEAD WIRE ASSEMBLY

1. The part quantity below indicates the required number of pieces per unit.

No.	Part No.	Part name	MSZ-FX24NL - U2	Symbol in Wiring Diagram	Remarks
1	E22 AU3 316	LEAD ASSY	1		Ground – HEAT EXCHANGER
2	E22 AU7 316	LEAD ASSY	1		CN102(Control P.C.B) – CN202(Power P.C.B)
3	E22 AU8 316	LEAD ASSY	1		TB – CN201(Power P.C.B)
4	E22 AU9 316	LEAD ASSY	1		TB – TAB3(Power P.C.B)
5	E22 AV1 316	LEAD ASSY	1		CN1J1(Control P.C.B) – I-SEE SENSOR ASSEMBLY
6	E22 AP5 316	LEAD ASSY	1		CN161(Control P.C.B) – SW/BZ P.C.B
7	E22 AP6 316	LEAD ASSY	1		CN151(Control P.C.B) – MV1/MV2
8	E22 AP7 316	LEAD ASSY	1		CN110(Control P.C.B) – WI-FI interface

1-11. AIR CLEANING FILTER

ELECTROSTATIC ANTI-ALLERGY ENZYME FILTER (BLUE)

Every 3 months:

- Remove dirt by a vacuum cleaner.

When dirt cannot be removed by vacuum cleaning:

- Soak the filter and its frame in lukewarm water before rinsing it.
- After washing, dry it well in shade.

Every year:

- Replace it with a new air cleaning filter for best performance.

NOTE 1: Clean the filters regularly for best performance and to reduce power consumption.

NOTE 2: Dirty filters cause condensation in the air conditioner which will contribute to the growth of fungi such as mold.

It is therefore recommended to clean air filters every 2 weeks.

NOTE 3: Do not touch the i-see sensor.

Model	Part No.
MSZ-FX06NL	MAC-2420FT-E
MSZ-FX09NL	
MSZ-FX12NL	
MSZ-FX15NL	
MSZ-FX18NL	
MSZ-FX24NL	

MICROPARTICLE CATCHING FILTER (WHITE)

Every 3 months:

- Remove dirt by a vacuum cleaner.
- Do not wash it with water. Replace it with a new air cleaning filter when tobacco tar or oil stains adhere to it.
- Put it back to its original position, and install all tabs of the air cleaning filter.

Every 3 years:

- Replace it with a new air cleaning filter for best performance.

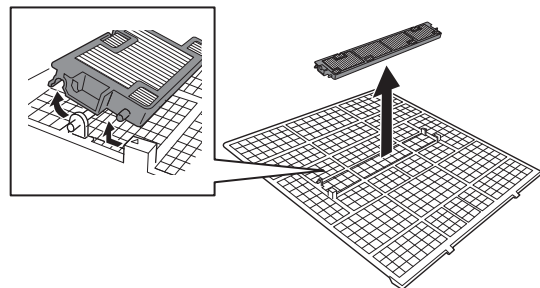
NOTE 1: Clean the filters regularly for best performance and to reduce power consumption.

NOTE 2: Dirty filters cause condensation in the air conditioner which will contribute to the growth of fungi such as mold.

It is therefore recommended to clean air filters every 2 weeks.

NOTE 3: Do not touch the i-see sensor.

Model	Part No.
MSZ-FX06NL	MAC-EMF415FT-E
MSZ-FX09NL	
MSZ-FX12NL	
MSZ-FX15NL	
MSZ-FX18NL	
MSZ-FX24NL	



2-1. AIR CLEANING FILTER DEODORIZING FILTER (BLACK)

Every 3 months:

- Remove dirt by a vacuum cleaner.

When dirt cannot be removed by vacuum cleaning:

- Remove dirt by a vacuum cleaner, or soak the framed filter in lukewarm water (30 to 40°C) for about 15 minutes. Rinse well.
- After washing, dry it well in shade.
- Deodorizing feature recovers by cleaning the filter.

When dirt or smell cannot be removed by cleaning:

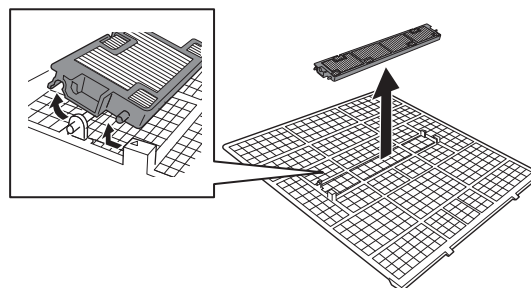
- Replace it with a new air cleaning filter.

NOTE 1: Clean the filters regularly for best performance and to reduce power consumption.

NOTE 2: Dirty filters cause condensation in the air conditioner which will contribute to the growth of fungi such as mold. It is therefore recommended to clean air filters every 2 weeks.

NOTE 3: Do not touch the i-see sensor.

Model	Part No.
MSZ-FX06NL	MAC-3010FT-E
MSZ-FX09NL	
MSZ-FX12NL	
MSZ-FX15NL	
MSZ-FX18NL	
MSZ-FX24NL	



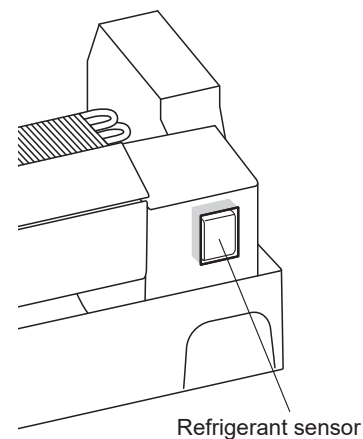
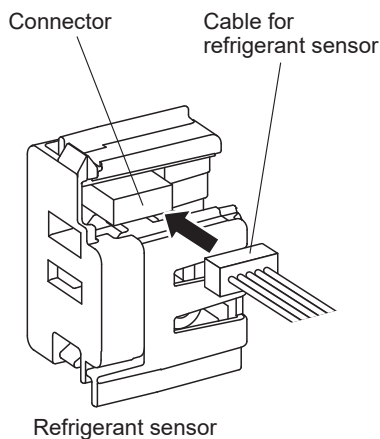
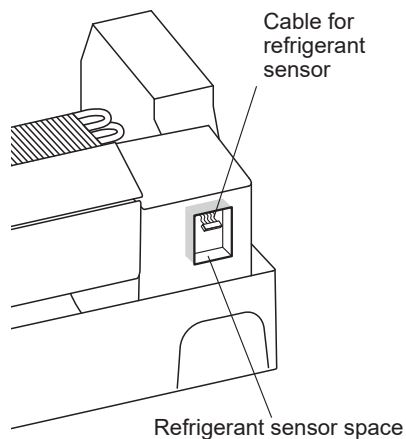
2-2. REFRIGERANT SENSOR

When connecting or disconnecting the connectors, hold the housing of the connector. **DO NOT** pull the lead wires.

When replacing the existing refrigerant sensor, refer to the service handbook of the model.

For the detailed assembling method, refer to the indoor unit installation manual.

- (1) Remove the panel.
- (2) Find the cable for the refrigerant sensor on lower right corner of the unit.
- (3) Connect the cable to the refrigerant sensor connector.
- (4) Put in the refrigerant sensor to the refrigerant sensor space.
- (5) Close the panel.



Model	Part No.
MSZ-FX06NL	MAC-100RS-E
MSZ-FX09NL	
MSZ-FX12NL	
MSZ-FX15NL	
MSZ-FX18NL	

MITSUBISHI ELECTRIC CORPORATION

HEAD OFFICE: TOKYO BUILDING, 2-7-3, MARUNOUCHI, CHIYODA-KU, TOKYO 100-8310, JAPAN

© Copyright 2024 MITSUBISHI ELECTRIC CORPORATION

Issued: Apr. 2026. No. OBB945 REVISED EDITION-A

Published: Sep. 2024. No. OBB945

Made in Japan

Specifications subject to change without notice.